

WOTZON

Whittlesea U3A

Weekly Fact Sheet

Edition 39 - 3rd December 2023



CONTACT DETAILS

CLASS COORDINATOR & COMMUNICATION MANAGER:

Natalie – communication@whittleseau3a.org.au (0412 230 561)
OR coordinator@whittleseau3a.org.au

TUTOR LIASON: Judy – 9464 1339 or 0404119189

FINAL WOTZON FOR 2023

Hello Everyone,

ENROLMENTS BEGIN ON TUESDAY 5TH DECEMBER @ 12.30pm both ONLINE and IN PERSON @ May Road Campus, Lalor

This is the final WOTZON for 2023. Thank you to all those members who have been reading it over the year and I hope it has kept you updated on what is happening at Whittlesea U3A. In 2024 the WOTZON will be published fortnightly and the first edition will come out to all those who are enrolled for 2024 about the 21st January 2024.

I am very sad to inform members that this week 2 of our loved tutors and long time members, Joan Delridge and Margaret Muldoon, have passed away. On behalf of all members and friends I would like to pass on our condolences to the families during this sad time.

IMPORTANT REMINDERS

- ◇ Just a reminder about the **Christmas lunch on Monday 4th December**. If you are listed as attending please be seated by 12.00. Remember that when you arrive at Epping RSL you will need to swipe your card at the entrance (if you are a member of the RSL) or sign in.
- ◇ The Line Dancing Social being held on Sunday 10th December at Epping Memorial is FULL No further enrolments can be taken. Unfortunately if you have not enrolled you will need to try next year. The social begins at 11.00 and doors open at 10.45.
- ◇ **A big reminder that the office at Peter Lalor is NOW CLOSED. It does not reopen until late January.**

I would like to take this opportunity to thank all the tutors and other volunteers who have worked so hard this year ensuring that Whittlesea U3A members receive every chance to social with friends and remain active. Season's Greetings to everyone. May you have the opportunity to celebrate, in whatever capacity, with family and friends. May 2024 be a year of peace and happiness and for all of our Chinese members remember that 2024 adds up to '8' so that must surely mean it's going to be lucky (I hope).

Natalie Lim, Communication Manager/Course Coordinator

communication@whittleseau3a.org.au (0412 230 561)



OFFICE HOURS for

WEEK BEGINNING MONDAY 4th DECEMBER

PETER LALOR CAMPUS

OFFICE IS CLOSED AND WILL REOPEN LATE JANUARY

MAY ROAD CAMPUS

OPENED: TUESDAY 12.30 TO 4.00 & THURSDAY - 10.00AM TO 4.00PM FOR ENROLMENTS

THE MAY ROAD OFFICE WILL BE CLOSED FROM THE WEEK BEGINNING TUESDAY 12TH DECEMBER AND WILL REOPEN LATE JANUARY

GENERAL ENROLMENT INFORMATION – IMPORTANT DATES

1. **MOST classes HAVE NOW ENDED.** Line dancing will have their last classes during the week beginning 4th December. All line dancing classes will end after the Line dancing social. Please refer to page 3 for classes that will be operating during the break. These are the only classes operating.
2. **Members can now view all available 2024 courses online** and you WILL BE ABLE to enrol in these classes from **12.30 Tuesday, 5th December.** [HERE IS THE LINK TO THE CURRENT 2024 COURSE SUMMARY. THIS CAN BE DOWNLOADED ON TO YOUR COMPUTER, TABLET OR PHONE.](https://whittleseau3a.org.au/wp-content/uploads/2023/11/Course-Summary-version-created-25th-November.pdf) [ALTERNATELY YOU CAN READ IT ONLINE.](https://whittleseau3a.org.au/wp-content/uploads/2023/11/Course-Summary-version-created-25th-November.pdf) <https://whittleseau3a.org.au/wp-content/uploads/2023/11/Course-Summary-version-created-25th-November.pdf>
3. **FOLLOW THIS LINK FOR THE 2024 CLASS & ACTIVITY TIMETABLE:** <https://whittleseau3a.org.au/courses-activities/timetable/>
4. **NEW MEMBERS can join Whittlesea U3A from NOW,** however they **will not be able to enrol into any classes until 5th December.** If a new member joins they will receive a 24000 number. New member subscription cost is \$65.
5. **Information about enrolments including FAQs can be found by following this link:** <https://whittleseau3a.org.au/memberships/>
6. **TUESDAY 5TH DECEMBER** – enrolments open both ONLINE and at MAY ROAD CAMPUS from 12.30pm until 4.00pm. Re enrollment subscription cost is \$60.
7. **THURSDAY 7TH DECEMBER** – FACE TO FACE enrolments continue at MAY ROAD CAMPUS from 10.00am to 4pm. Re enrollment subscription cost is \$60.
8. You will be able to continue enrolling ONLINE and pay subscription costs during most of December and January. There will be some dates when the ONLINE enrolments will be closed for administrative purposes.
9. Information regarding your enrolment will be emailed to you (mailed for those without an email address) in the week beginning 22nd January 2024. Please check your SPAM/JUNK MAIL folder just in case it goes there. If you do not receive your information by Thursday 25th January please email, or leave a message for the office or the course coordinator to contact you. Whittlesea U3A volunteers will still be on their break during this time so please be patient.
10. **Classes will resume in the week of Tuesday 30th January 2024. Some classes will begin earlier or later than this so check your enrolment details carefully when you receive them.**

Just a reminder to all members that the volunteers at Whittlesea U3A will be on break from Friday 8th December. After this date, if you contact us either through the office phone lines or my phone you will need to leave a detailed message. Phone messages will be replied to later in January. Be patient and we will see everyone who enrolls for 2024 with lots of news, great classes and activities plus the opportunity of have fun beginning from February. Should you wish to contact me during the break, an email is better as I will then have a detailed record.

Thank you for your support Natalie Lim

JUST A REMINDER THAT THE FOLLOWING ACTIVITIES WILL BE CONTINUING OVER THE BREAK.

The following activities will be continuing over the holiday break. They will not be operating during the usual public holidays of CHRISTMAS DAY, BOXING DAY, NEW YEAR'S DAY and AUSTRALIA DAY. Please check with the tutor to see which days during December and January the activity has been cancelled.

1. **COFFEE AND CHAT** with Anne on Fridays starting at 1.00pm
2. **CARDS 500 LAURIMAR** with David on Mondays starting at 1.00pm
3. **CARDS 500 EPPING** with Alby together with **CARDS 500 LALOR** with Tyrone during the break at Epping Memorial on Tuesdays starting at 10.00am
4. **CANASTA** with Flo on Mondays starting at 12.00pm
5. **WALK AND TALK** with Joy on Mondays starting at 9.15am
6. **AQUA AEROBICS - AQUA AEROBICS - TRAC** on Fridays starting at 10.15
7. **AQUA AEROBICS - MILL PARK LEISURE CENTRE** on Tuesdays starting at 10.15. This activity will be available from *Tuesday 5th December to Tuesday the 19th December and will restart on Tuesday the 18th January*. There will be **NO CLASSES BETWEEN TUESDAY 19TH DECEMBER & TUESDAY 18TH JANUARY 2024** unless those who were enrolled in the program in 2023 are notified of a change.

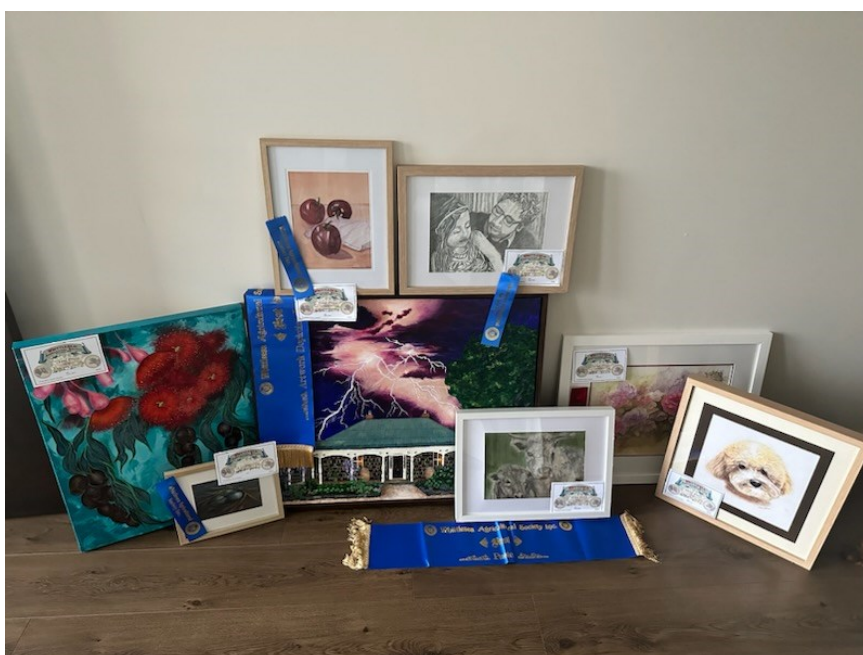
3D PRINTING CLASS AT PETER LALOR CAMPUS IN 2024

We have a new tutor who is organising a class at Peter Lalor Campus on 3D Printing. At this stage the day and time have not been finalised however if this is something you may be interested in keep an eye out for enrolment information early in 2024.

ART OF FUN GROUP RECEIVE AWARDS AT WHITTLESEA SHOW

Art for Fun members entered 13 paintings in the Whittlesea Agricultural Show this year and won 8 awards! Art works were painted by Simone- 4 awards; Chun Chin -1 award; Noelene J. -2 awards and Beryl- 1 award. We are all thrilled by the results which gives us an added incentive to do bigger and better next year.

There were also paintings sold by our members at the Whittlesea Council Annual Art Show which added to our excitement



CALENDAR OF MAIN EVENTS—Term 4 2023 & Term 1 2024

DATE	EVENT	LOCATION
DECEMBER 2023		
Monday 4th @ 11.00	Breakup Christmas Celebration Lunch	Epping RSL
Tuesday 5th @ 12.30	Enrolments for 2024 begin BOTH FACE TO FACE & ONLINE	May Rd Campus
Thursday 7th @ 10.00	Enrolments for 2024 continue BOTH FACE TO FACE & ONLINE	May Rd Campus
Thursday 7th @ 10.00	Market Day at May Road.	May Rd Campus
Thursday 7th @ 4.00	May Road Office closes for holiday break after enrolment day	May Rd Campus
Sunday 10th @ 11.00	End of Year Line Dancing Social	Epping Memorial Hall
JANUARY 2024		
Monday 29th @ 11.00	Volunteer Thank You Lunch	Epping RSL
Tuesday 30th @ 9.00	MOST classes begin this week	Various Locations

MARKET DAY AT MAY ROAD ON THURSDAY 7TH DECEMBER

On Thursday 7th December - the second day of enrolments at May Rd, we have organised a small market. Some of our members will be selling products including the Whittlesea U3A eBook publishing class latest publication; jewellery; embroidery; cards; and home made Egyptian artifacts. They will be situated in the room just before the hall. Have a look at what they have just in time for Christmas.