

# WOTZON

Whittlesea U3A

**Fortnightly Fact Sheet**

**Edition 12 —23rd June 2024**



## CONTACT DETAILS

**CLASS COORDINATOR & COMMUNICATION MANAGER:**

Natalie – [communication@whittleseau3a.org.au](mailto:communication@whittleseau3a.org.au) (0412 230 561)  
OR [coordinator@whittleseau3a.org.au](mailto:coordinator@whittleseau3a.org.au)

TUTOR LIASON: Judy – 9464 1339 or 0404119189

Hello Everyone,

**Term 2 is almost finished** and most tutors and other volunteers are looking forward to a well earned break. Hopefully we get pleasant weather over the two week break so we will have time to complete all those unfinished projects and go on all those outings especially if they are outdoors.

Some classes - especially the card classes, will continue over the break so make sure you ask your tutor for any information about this. Those in Tyrone's card group on a Tuesday will be able to attend Alby's class at Epping Memorial as Peter Lalor Campus will be closed over the break.

**Lalor Library is now back to normal after completing their renovations and the Community rooms at Thomastown Library have also had a bit of a face lift. Thomastown Library itself will be closed until later in July.**

**Two events are being held during the break:**

- ◇ The June Line Dancing Social ON Sunday 28th June and
- ◇ High Tea at Mernda ON Thursday 11th July

Please make sure you read page 3 of this edition for information about both of these events.

There is also an article on the very successful Big Cuppa Morning Tea which was organised by Jodie and Heather C and which raised over \$780 for the Council. The ladies have decided to make this a yearly event. Thank you to all those who attended and donated so generously and a special thank you to all the organisers.

**Our next Monthly Morning Tea is being held during the break on Monday 1st July.** Rad from ARCARE will be attending the morning and providing members with some important information regarding both Respite Care and Aged Care in general. Her aim is to remove some of the misconceptions about both these topics. It will be a very informed talk/discussion and a worth while event so I am hoping lots of members will be able to attend.

Finally thank you for all the hard work that our fantastic Whittlesea U3A tutors have done over the last 6 months and once the cold spell is over and we start getting 'better' weather lots more activities may be added to the calendar. Next week we will have a 'Breaking New' edition and the next WOTZON will be just before the beginning of Term 3 providing you with all the information you need to start the new term.

*Natalie Lim, Communication Manager/Course Coordinator*

## **OFFICE HOURS for WEEK BEGINNING MONDAY 24th June**

### **PETER LALOR CAMPUS**

**OFFICE WILL BE OPENED** Monday, Tuesday and Wednesday 10.00 TO 2.00 & Thursday 10.00 TO 1.00.

**OFFICE WILL BE CLOSED ON FRIDAY**

**MAY ROAD CAMPUS OFFICE WILL BE OPENED:** Tuesday 1.00PM TO 4.00 & Thursday - 9.00 TO 4.00PM

*Remember both offices are closed during the term break. Peter Lalor office will close from 1.00pm on Thursday 27th June and will reopen on Monday 15th July and May Road office will close after 4.00pm on Thursday 27th June and reopen on Tuesday 16th July.*

**THE FOLLOWING PROGRAMS HAVE CHANGES PLEASE READ THE INFORMATION CAREFULLY AS IT MAY AFFECT YOUR CLASS**

**PLEASE REMEMBER classes will end this week for the term break (2 week break). There will be no classes during the break unless the tutor informs you otherwise.**

**ITALIAN INTERMEDIATE with ANTONIO** will resume in Term 3 at Lalor Library

**FRENCH CONVERSATION with CHRISTIANE** will resume in Term 3 at Lalor Library

**ADVANCED LINE DANCING FOR FUN with MIA** will be restarting in Term 3. Great to hear that Mia is feeling much better

**LINE DANCING FOR VARIOUS LEVELS with MIA** will be restarting in Term 3

**INDOOR WALKING AEROBICS with ANN** at Riverside will be starting in Term 3

**ANDROID, TABLET AND SMARTPHONE HELP with ANTONIO** will resume in Term 3

**LAPTOP WINDOWS 10/11 with KEVIN** has moved to Mill Park Library. It will return to Thomastown Library once we are informed the renovations are finished. More information will be provided as soon as we have them.

**COMPUTERS LEVEL 1 with PETER** has moved to Mill Park Library. It will return to Thomastown Library once we are informed the renovations are finished. More information will be provided as soon as we have them.

**KNITTING GROUP with DIANA** have added 2 extra dates to their calendar in Term 3. There will be classes on Wednesday the 17<sup>th</sup> of July and Wednesday, the 31<sup>st</sup> of July

**WALKING NETBALL with MARGARET** has been cancelled for Term 3. Margaret will be back in term 4 with a new program – Walking Basketball. Keep an eye out for this new event in the calendar over the next few months.

**BILLIARDS with MICHELE.** There will be no billiards on Tuesday 25<sup>th</sup> June. The group will return in Term 3.

**WALKING GROUP with BETH.** There will be no walking group class this week however they will meet over the break for their weekly walk.

**EXPLORE MELBOURNE GARDENS with MICHAEL.** This activity will not be held in June. Michael will see everyone in July.

**URGENT INFORMATION FOR TUTORS and CLASS MEMBERS**

Our class tutors do a fantastic job every week organising activities that keep members interested, informed and entertained. It is essential that if you are unable to attend a class you either notify the tutor, if you have their contact details, tell the office or record your absence in the register. I understand that there are times we cannot tell a tutor early however **PLEASE REMEMBER** that if a tutor cancels a class because members are not attending we need to know at least 2 business days prior to the time of the class. ***Whittlesea U3A is charged for venues and when there are last minute class cancellations (on the day of the activity especially) the council still charges us. This seems like a waste of your funds so please help us to contact the council early by informing the tutor of any absences. Tutors early notification of class cancellation is essential so we do not get charged for the venue.***

## CALENDAR REMINDERS

**LINE DANCING SOCIAL** – Just a reminder that the June Line Dancing Social is being held on Sunday 28<sup>th</sup> June. This event is full with over 120 Whittlesea U3A members and their friends attending. The cost of the full day of dancing is \$2 for members and \$5 for non members PAYABLE AT THE DOOR. There will be 12 large tables available for participants to sit at (11 at each table) with their friends however this year we have not organised names on specific tables. If you would like your friends to sit together you will need to get there early (doors open at 10.45). Please make sure you get your name marked off when you enter the hall, even if you are not a member of Whittlesea U3A as we need to keep count of the number of people attending for our records. Members will be able to reserve a seat for only small groups when they attend so please get there early to avoid disappointment. The tutors have the front 2 tables to give them full access to the stage and music system.

**HIGH TEA AT MERNDA** Thank you to all those members who enrolled in the High Tea at Mernda at Carome Homestead scheduled for Thursday the 11th July. At this stage we have almost reached our quota but I have 6 places left. If you have a non Whittlesea member who would like to come please invite them. You will need to either email, text or call me so I can record your details and organise payment. All payments must be done prior to the event. The price will still be \$30. Please remember that from today on there will be no refunds able to be provided as numbers attending to date are final. Your friends do not have to be a Whittlesea U3A member to fill these spots.

## REDUCED SUBSCRIPTION FOR Whittlesea U3A ENROLMENT FOR BALANCE OF 2024

Beginning from the 18<sup>th</sup> June the subscription for joining Whittlesea U3A during the second half of 2024 has been reduced. It is now \$45 for new members and \$40 for re-enrolments until the end of 2024. There are still many classes which have vacancies so becoming a member now will still give you 5 months of great outings, exercise classes, craft sessions etc.

## REPLACEMENT LANYARDS

For those members who have misplaced their lanyards the cost of getting a new one is \$2 and \$1 for the plastic pocket. 2024 new members receive their lanyards regularly either by post or at the office upon enrolment. All other members will need to pay for a replacement as the cost of purchasing these items has increased dramatically. Please check at home before asking for a new lanyard if you would like to avoid the extra cost. These charges will be for purchases at either the Peter Lalor or the May Rd. campus. Postage costs may apply if you wish your lanyard posted.

## WHITTLESEA U3A T-SHIRTS

Marion Gaylard has become the new coordinator for the purchase of the Whittlesea U3A T-Shirts. These T-Shirts are popular with members taking part in exercises and outdoor activities. At this stage, until we can contact the supplier, we are unsure if there has been a price increase but in the past they have cost \$25. Once I have more information I will advertise cost and method of purchase etc. Please contact either Marion or myself if you are interested in purchasing a T-Shirt so we can contact you once we have all the information.

## ATTENTION PHOTOGRAPHERS WE NEED YOUR INPUT FOR A WEBSITE PHOTOS UPDATE

We are looking for photographers to provide photos to update / refresh those on our website home page - <https://whittleseau3a.org.au/>

There are 5 photos and you may chose to provide one or more of these

- ◇ Header / top of page image (should represent Whittlesea)
- ◇ Courses and Activities (show U3A members enjoying a class or activity)
- ◇ Memberships (encourage new members to join)
- ◇ Latest News (difficult to describe but depict News)
- ◇ Contact Us (show friendly office volunteers assisting a member)

Full resolution photos are preferred and please send by email to [info@whittleseau3a.org.au](mailto:info@whittleseau3a.org.au)

**Wherever members are photographed, please get their permission and include their names in the email along with the photo.**

FOR FURTHER INFORMATION PLEASE CONTACT KEVIN ON [info@whittleseau3a.org.au](mailto:info@whittleseau3a.org.au)

This is an exciting opportunity for members to have their photos included on the Whittlesea U3A website. All photos will be considered so why not contact Kevin or send him your photos.

### TEA AND COFFEE AT MAY ROAD

*We have been advised by the City of Whittlesea that we are responsible for the removal of all rubbish at all the venues we use. This often means that a small handful of members, usually volunteer tutors, are left to collect the rubbish and remove it to outside bins or take it home. In May Rd this has caused a problem because of the large number of disposal cups that are used and placed in bins. Some members could have anything up to 5 cups of tea/ coffee whilst there and they use a new disposable cup each time. This is bad for the environment and for the rubbish collection.*

*For this reason beginning from Term 3 tea and coffee will still be available however there will be no paper cups available. If you wish to have a cup of tea or coffee you will need to bring your own cup and take it home when finished. Cups on the premises are not the property of Whittlesea U3A and cannot be used. It is not the responsibility of the tutors to clean up cups so please remember that they are volunteers when you leave your dirty cup in a sink or your rubbish on tables for them to clean up because you did not have time to clean up your one cup or throw out your sugar container. Thank you to all members who have been so helpful and positive in this matter.*

### INTERESTED IN MORNING MELODIES

If you enjoy the morning melodies program than this will be of interest to you.

The City of Whittlesea and the Positive Ageing Team through LEAP have organised a monthly MORNING MELODIES program at Kirrup Community Centre, 135 De Rossi Blvd, Wollert VIC 3750

**Schedule** : Tue, 10:00am – 12:00pm

**Frequency**: Every 4th Tuesday of each month ( except Public Holidays). The activity will be on until the end of November.

**Cost** is \$12 and this includes Morning Tea.

If you are interested please register your attendance on the link <http://www.trybooking.com/CFZCY>

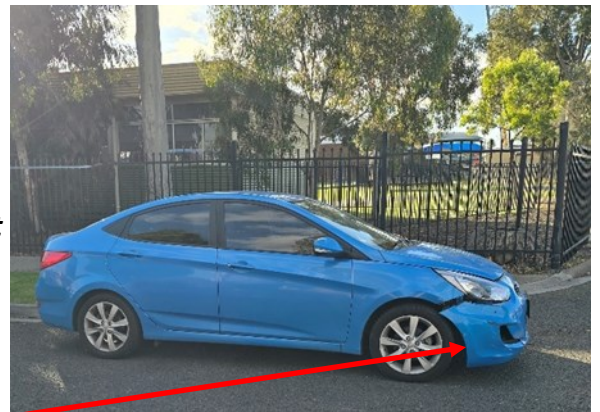
This is a LEAP program so you will need to register as a LEAP member to attend. There is no cost to being a member of LEAP. Here is the link if you are interested in applying and for further information: <https://www.whittlesea.vic.gov.au/media/fmjniphl/leap-membership-form-feb-2023.pdf>

## **STREET PARKING AT PETER LALOR CAMPUS, ROBERT STREET LALOR.**

*Everyone who attends classes at Peter Lalor Campus knows that at the moment, until the new building is finished, due to building construction, school traffic, local traffic and Whittlesea U3A classes there are times when parking on Robert Street is very difficult. However we have to remember that there are laws governing the way we park our cars. We are using an area that is in high demand due to the number of people who live and work there. It is against the law to park like this (refer to photo below) or to totally block a private driveway. The owner of this car found this out the hard way. Every week this car parks over the school's driveway. Unfortunately on this occasion they were not so lucky as a Mee's Bus lines bus hit the car, trying to get into the driveway. So to avoid walking a little further the owner now has car repair issues. The council was also contacted and a Parking Infringement fine was also issued. PLEASE REMEMBER YOU CANNOT PARK this far over the school driveway or block the drive totally. School buses*



*need to be given total access to get in and out of the school and local residents need full access to get in and out of their home. Parking officers from the City of Whittlesea will be visiting the area and will issue fines to those who are not parking correctly so it could be a very expensive*



*Whittlesea U3A class.*

**PARKING IN THE WRONG PLACE COULD RESULT IN THIS PLUS A PARKING INFRINGEMENT**

## **BIG MORNING TEA**

*Last Thursday 20<sup>th</sup> June Whittlesea U3A had their first Big Cuppa Tea Morning to raise money for the Cancer Council. The activity was a great success with over 30 people attending. Over \$780 was raised at the event. It is anticipated that this will become a regular feature on the Whittlesea U3A calendar.*

*Thanks to the hard work and organisation of Jodie Lang and Heather Carbis and their band of helpers for all the work they did to make this event so successful. If you were unable to attend and would still like to donate to the Cancer*

*Council please contact a member of the office staff.*



## SPECIAL INTEREST ACTIVITY IN THE SOUTH MORANG AREA

CODE: 243WED24

NAME: QUARRY HILLS SENIOR STEWARDS PROGRAM

LOCATION: Quarry Hills Drive and Palisades Blvd

START DATE: Wednesday 12<sup>th</sup> June - **IT IS ON THIS WEEK**

FINISH DATE: Wednesday 13<sup>th</sup> November

FREQUENCY: Fortnightly

DAY: Wednesday

TIME 9.30 – 12.30

TUTOR 1: Biodiversity Group

TUTOR 2: Glen Wall

DESCRIPTION: Meeting Point: Near the corner of Palisades Blvd and Quarry Hill Drive. **Park along Palisades Blvd.**

**Public Transportation also available:** 383 Bus stops at Quarry Hill Dr/Meridian Dr, very close to our meeting spot.

### ***What you will be doing:***

- Visit existing wetland project
- Visit new wetland site
- Photograph/iNaturalist use
- Identification of species
- Hand Weeding
- Litter Collecting

***Please bring with you/wear:*** Water Bottle; Long Sleeved Shirt and Long Pants (to protect against scratches); Gaters (optional); Comfortable walking shoes with closed toes; and Notepad and Pen, for sketching ideas and taking notes (optional)

***You can download the iNaturalist App to your phone or tablet prior to the day, if you would like to use this to help identify species and collect data. The links for this download are:***

**Android Phone:** [https://play.google.com/store/apps/details?id=org.inaturalist.android&hl=en\\_AU&pli=1](https://play.google.com/store/apps/details?id=org.inaturalist.android&hl=en_AU&pli=1)

**Apple Phone:** <https://apps.apple.com/au/app/inaturalist/id421397028>

**MEETING PLACE – MARKED IN BLUE; SUGGESTED PARKING – MARKED IN YELLOW**



### **WALKING FOOTBALL GROUP information,**

Arrangements are well underway for the Whittlesea U3A Walking Football teams attending the Pan Pacific Games at the Gold Coast in October. All those attending are getting fitted with their kits and doing lots of practise. A sausage sizzle at Bunnings Epping is on next Sunday (30<sup>th</sup> June) to help raise money for this venture so if you plan to go to Bunnings next week don't forget to buy a sausage from the group.

Next week is the group's last visit to Mill Park Secondary College where they have been taking part in a 6 week program of Walking Football and Walking Netball. Why this event is different is because it is run by the students at the college as part of their educational commitment. The program has been extremely successful and discussions are being held regarding our future involvement.

Unfortunately due to Council elections the Young at Heart Games planned for October have been cancelled. The new dates are in the second and third week of November with the opening ceremony and torch walk to be held on the 12<sup>th</sup> November. More details to come when available

## CALENDAR OF MAIN EVENTS - Term 2 & 3 2024

DATE	EVENT	LOCATION
<b>JUNE 2024</b>		
Friday 28th	END OF TERM 2	MOST CLASSES END TODAY
Sunday 30th	WALKING FOOTBALL BUNNINGS SAUSAGE SIZZLE	BUNNINGS EPPING
Sunday 30th 11.00	Line Dancing Social	Epping Memorial Hall
<b>JULY 2024</b>		
Saturday 1st, 11.00	Community and Health Expo	Mill Park Library
Monday 2nd 10.00	Monthly Morning Tea (THIS IS DURING THE TERM BREAK)	Epping RSL
Monday 8th 9.30	Committee Meeting (THIS IS DURING THE TERM BREAK)	Mernda Support Centre
Thursday 11th 12.00	Whittlesea U3A High Tea at Mernda.	Two Beans at Carome, Mernda
Monday 15th	TERM 3 BEGINS	MOST CLASSES BEGIN THIS WEEK

*Tutors remember that I would love to advertise activities which are happening within Whittlesea U3A. These can be one off articles or as with the Walking Football a regular section placed in most editions. Just email me your information with or without photos/pictures and I will publish it.*

### **WHITTLESEA U3A BANKING DETAILS**

**Account Name: Whittlesea U3A Inc.**

**BSB: 033 137**

**Account Number: 189765**

- ◇ IF YOU PAY ONLINE PLEASE PUT YOUR MEMBER NUMBER IN THE REFERENCE SECTION.
- ◇ IF YOU PAY AT A WESTPAC BANK PLEASE ASK THE BANK TELLER TO INCLUDE YOUR U3A MEMBERSHIP NUMBER IN THE REFERENCE SECTION